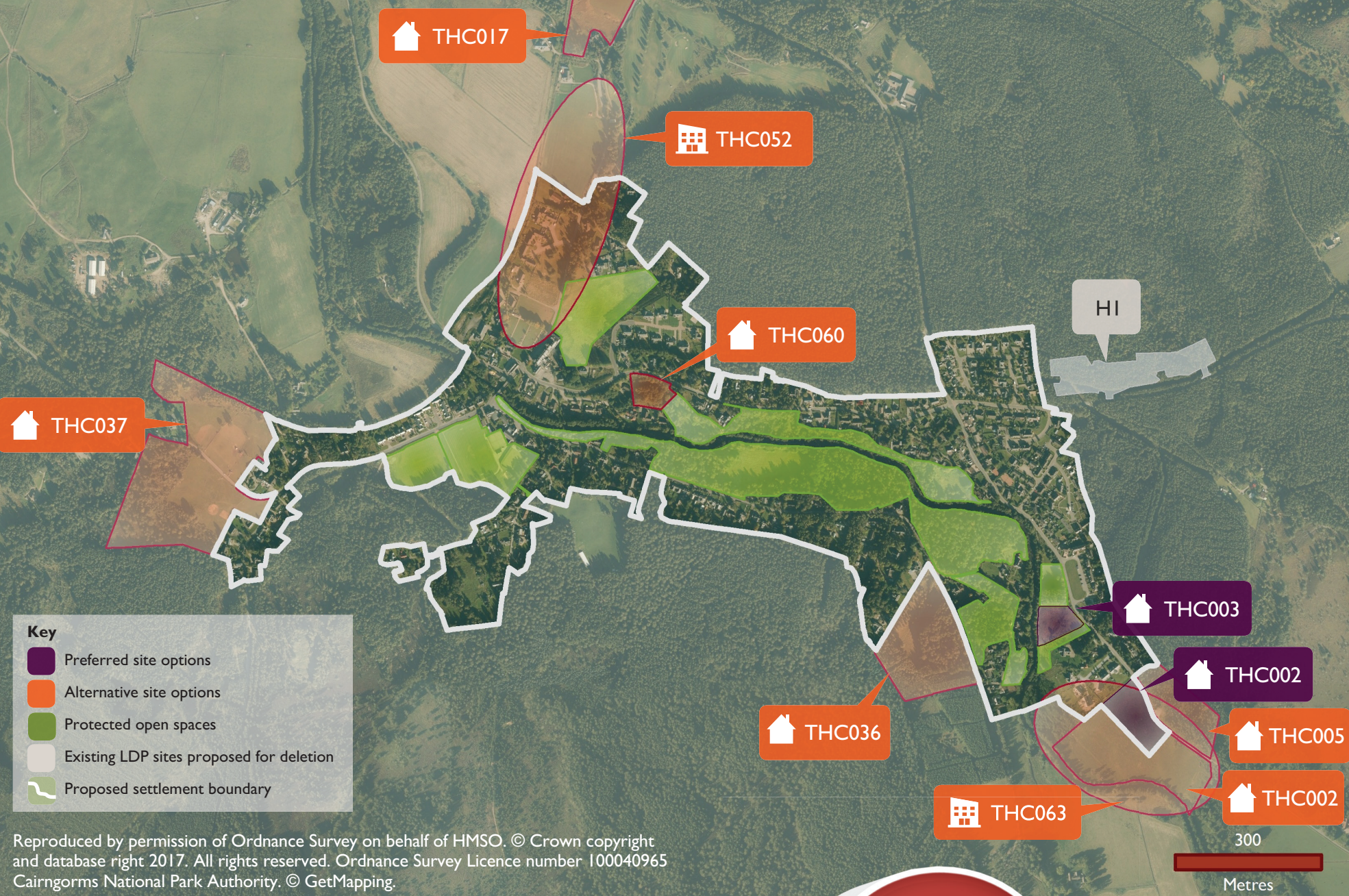


# NETHY BRIDGE



## Preferred Site Options

Preferred sites to be carried forward from 2015 Local Development Plan:

- No preferred sites to be carried forward

Sites from 2015 Local Development Plan preferred for **deletion**:

- HI (allocated in 2015 LDP for 15 houses) due to significant natural heritage constraints

Preferred new site allocations\*:

- Part of THC002 allocated for up to 20 houses
- THC003 allocated for up to 4 affordable houses

## Alternative Site Options (not preferred)\*

- Allocate all of THC002 for 50 houses
- Allocate THC005 for 7 houses
- Allocate THC017 for 14 houses
- Allocate THC036 for 6 – 8 houses
- Allocate THC037 for housing
- Allocate THC052 for economic development
- Allocate THC060 for 2 – 3 houses
- Allocate THC063 for economic development

\* Our assessment of preferred new site allocations and alternative site options can be found in the Site Assessment Report published alongside the Main Issues Report

NETHY BRIDGE is a small woodland village and is an attractive destination for visitors. The village has a good range of community facilities and an extensive local path network.

### Issues for Nethy Bridge

- Maintain provision of community facilities
- Ensuring that new housing can be delivered to help the community remain sustainable
- Provision of affordable housing
- Provision of small business units
- Flood management and resilience

### Proposed settlement objectives

- Support the delivery of housing that meets local needs, particularly affordable housing
- Support proposals for small-scale business development
- To increase and enhance flood management and resilience

How should Nethy Bridge develop in the future?



## Consultation Questions

- Have we identified the right main issues for Nethy Bridge?
- Do you agree with the proposed settlement objectives?
- Do you agree with the preferred site options?
- Do you agree with the protected open spaces?
- Do you agree with the proposed settlement boundary?