

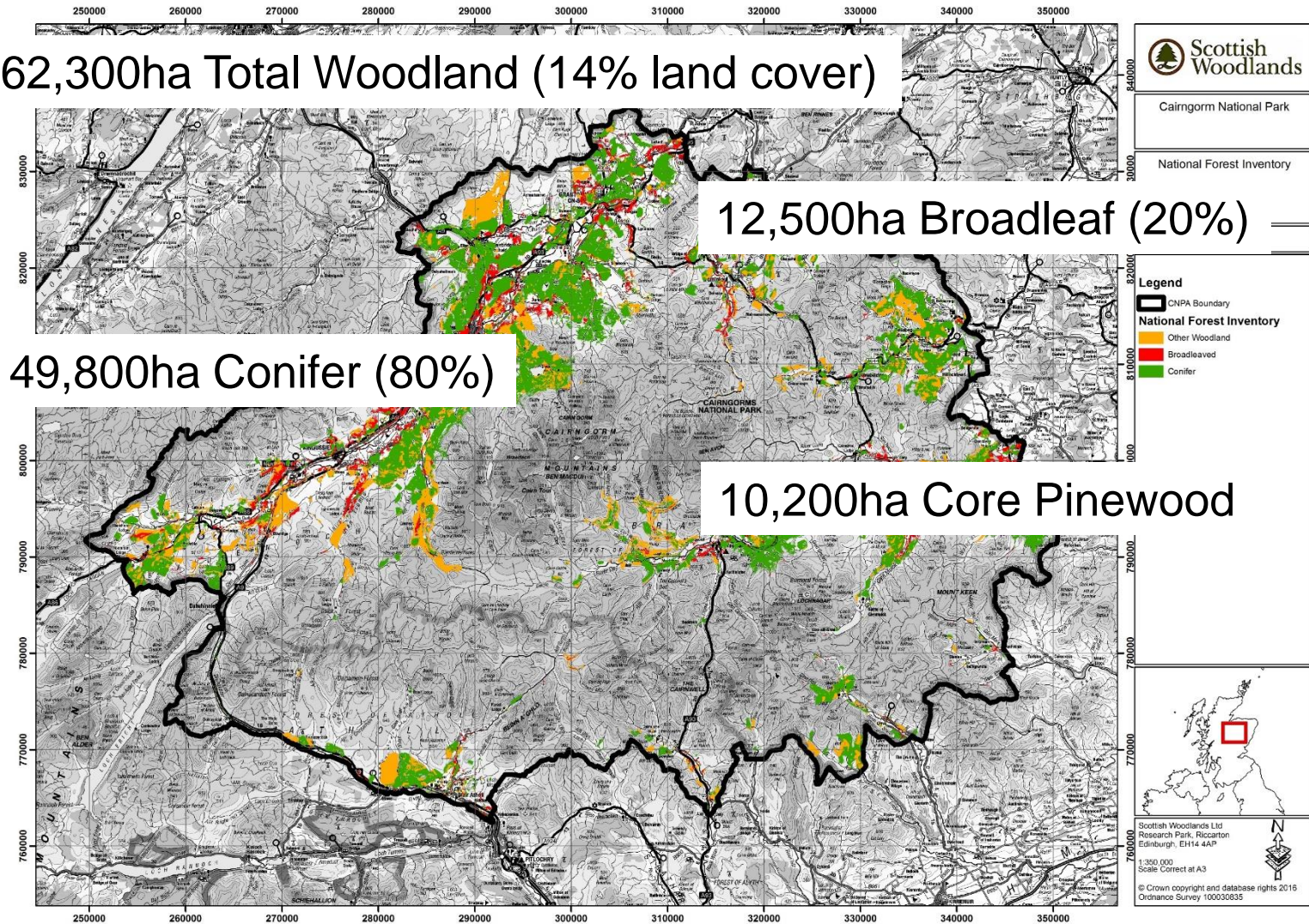
Cairngorms Forests; Where next?

Commercial Forests in the Park

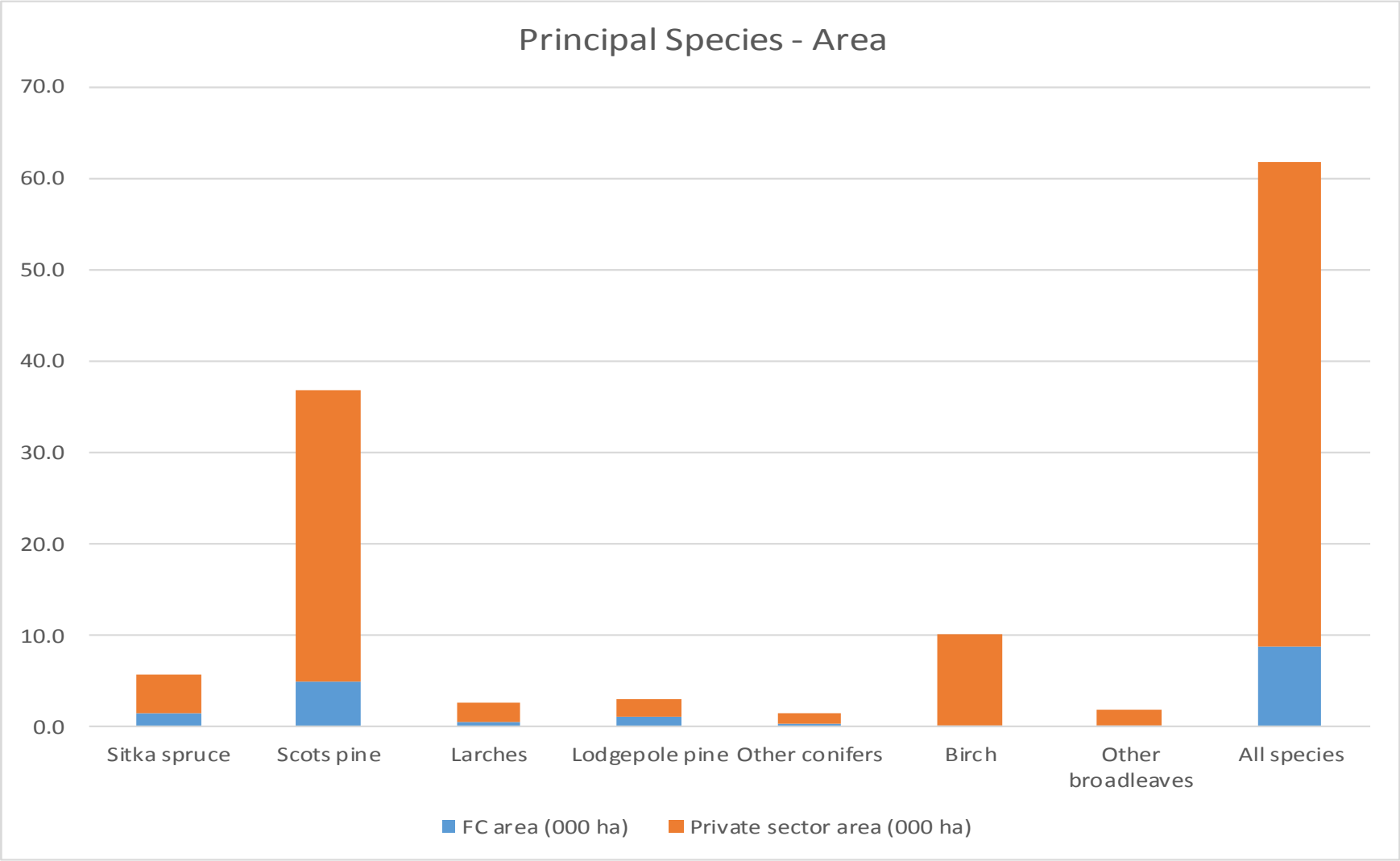
David Robertson

Backdrop

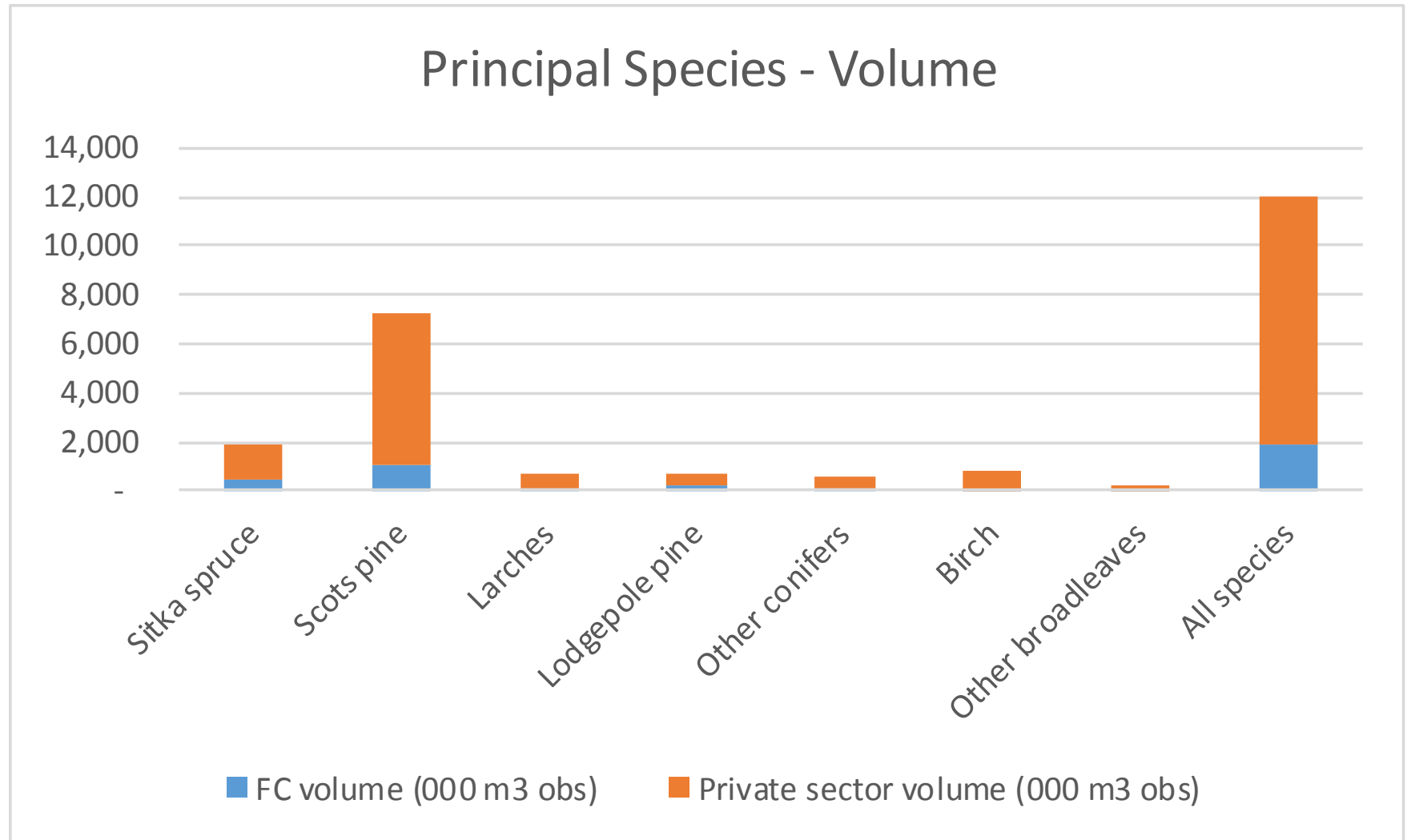
62,300ha Total Woodland (14% land cover)



Backdrop



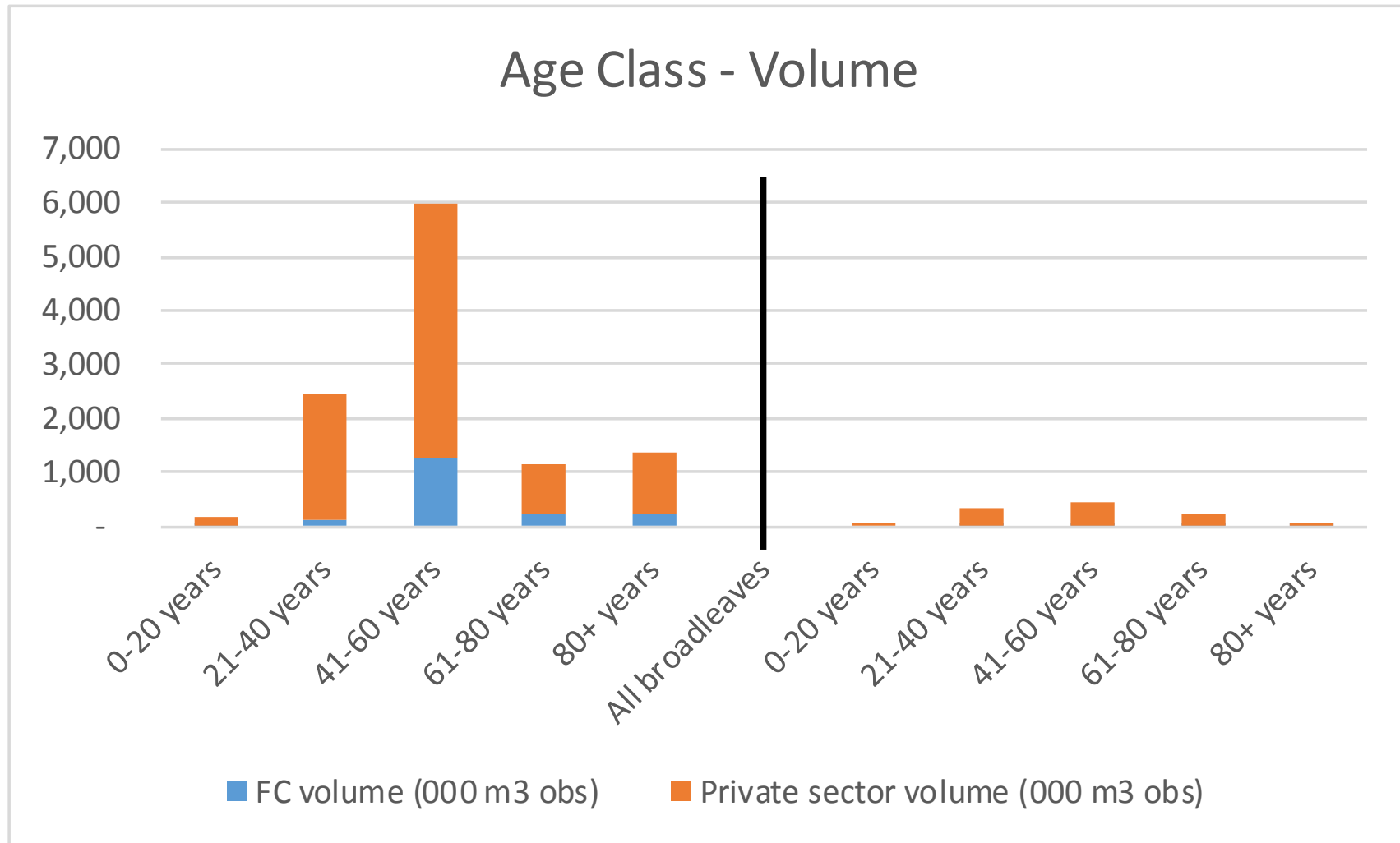
Backdrop



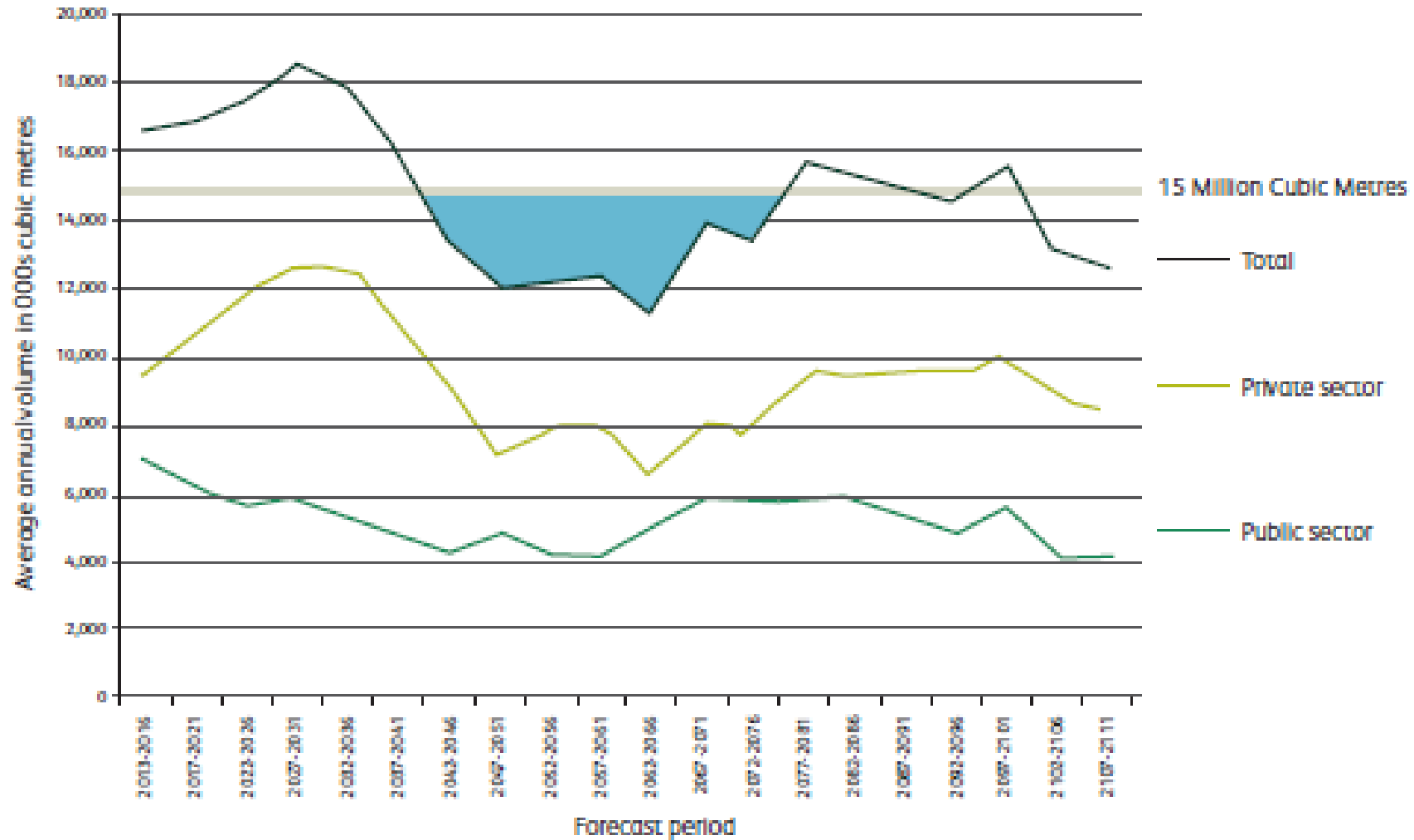
Backdrop



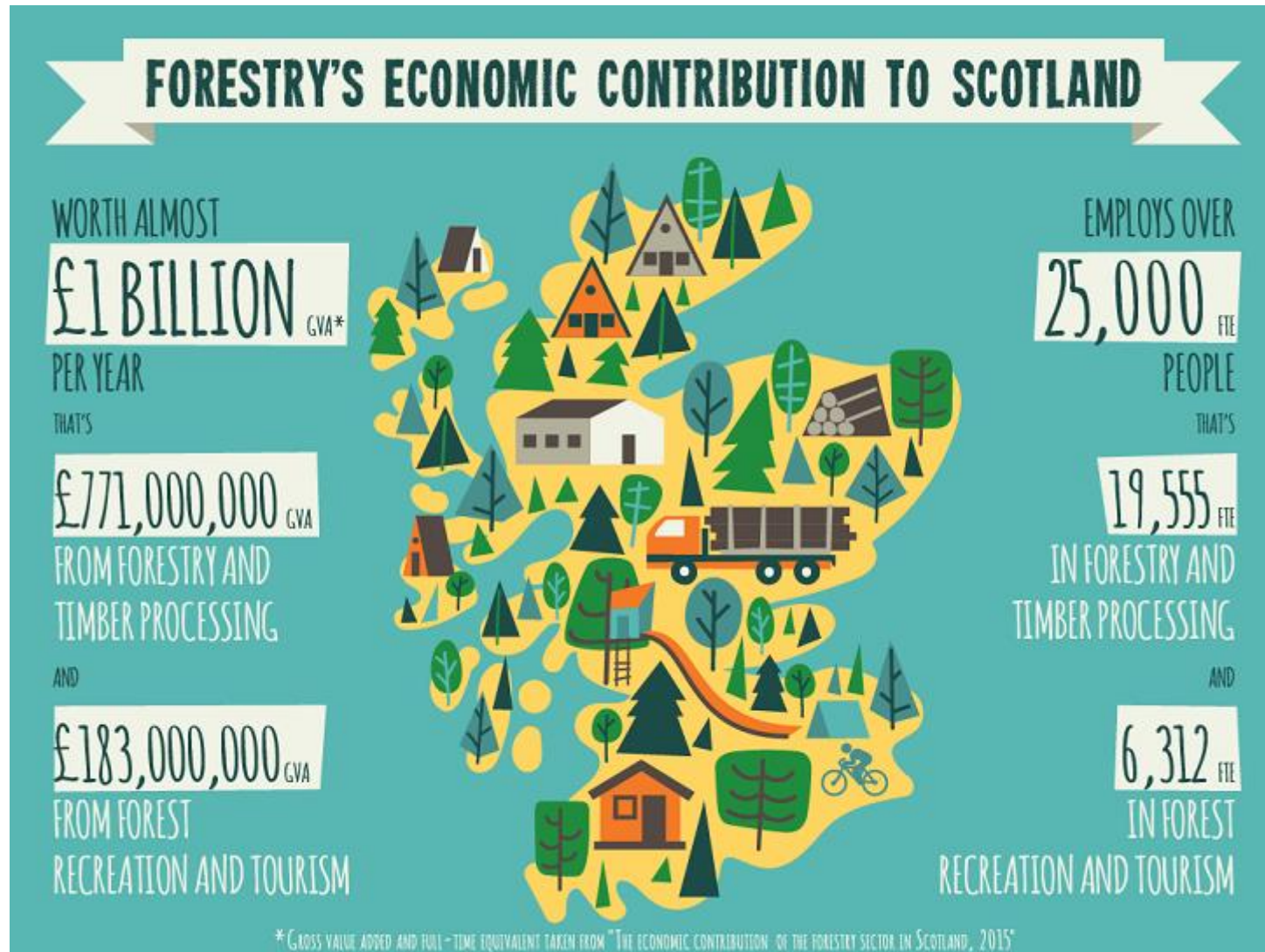
Backdrop



Backdrop (FC 50yr Timber Availability)



Policy



Confor's five-point forestry action plan



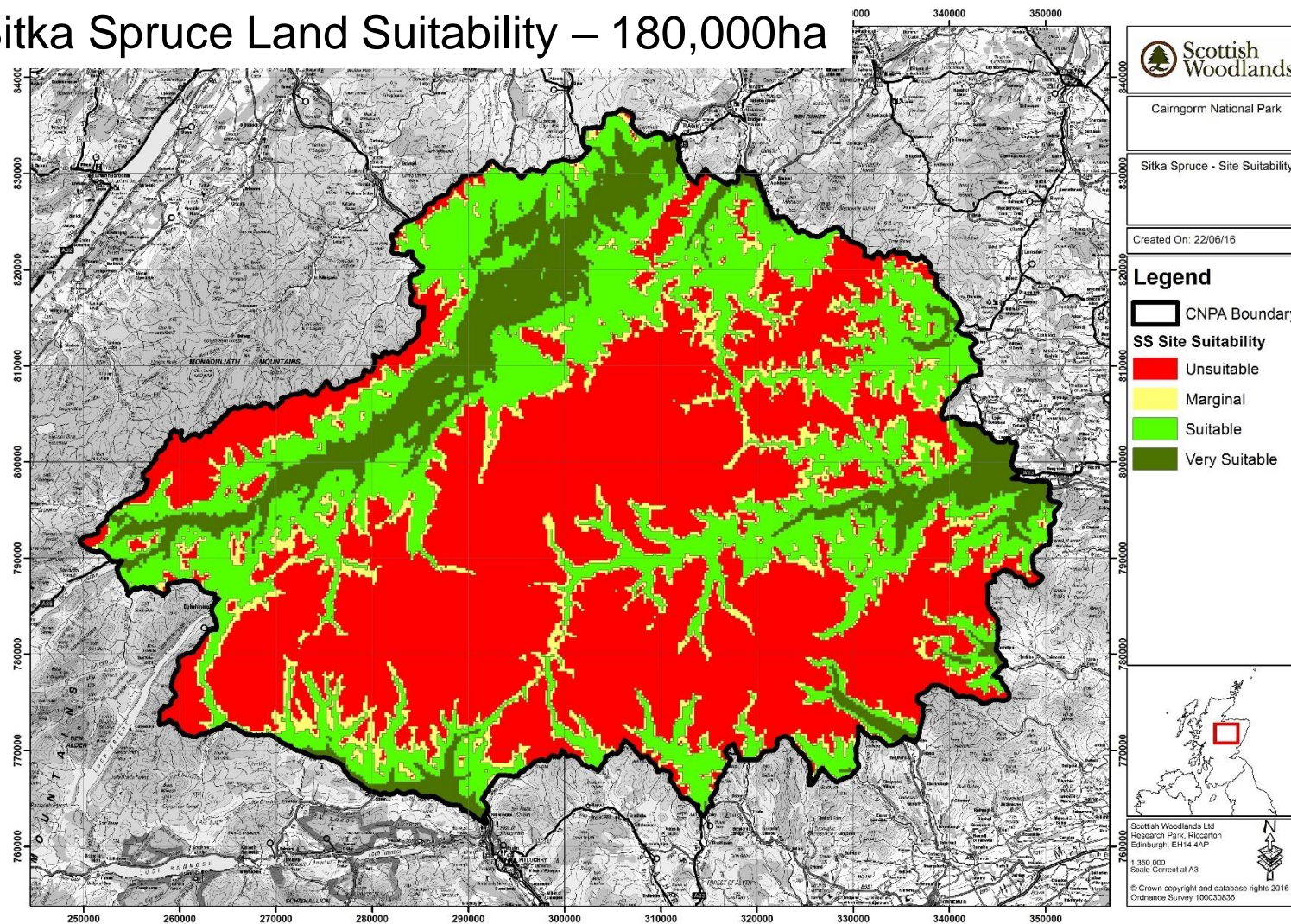
What do we need?

COMMERCIAL WOODLAND...



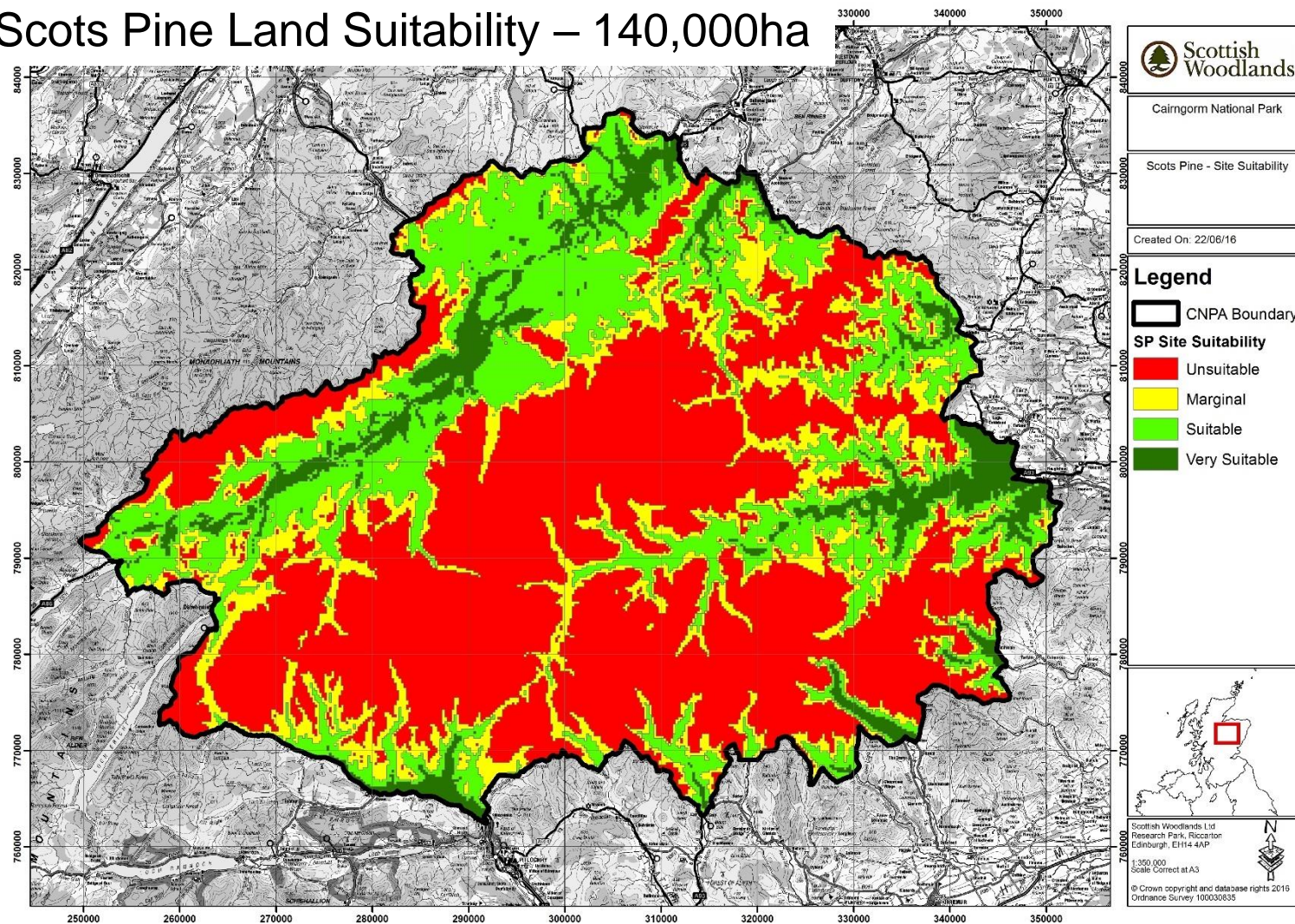
What do we need?

Sitka Spruce Land Suitability – 180,000ha



What do we need?

Scots Pine Land Suitability – 140,000ha

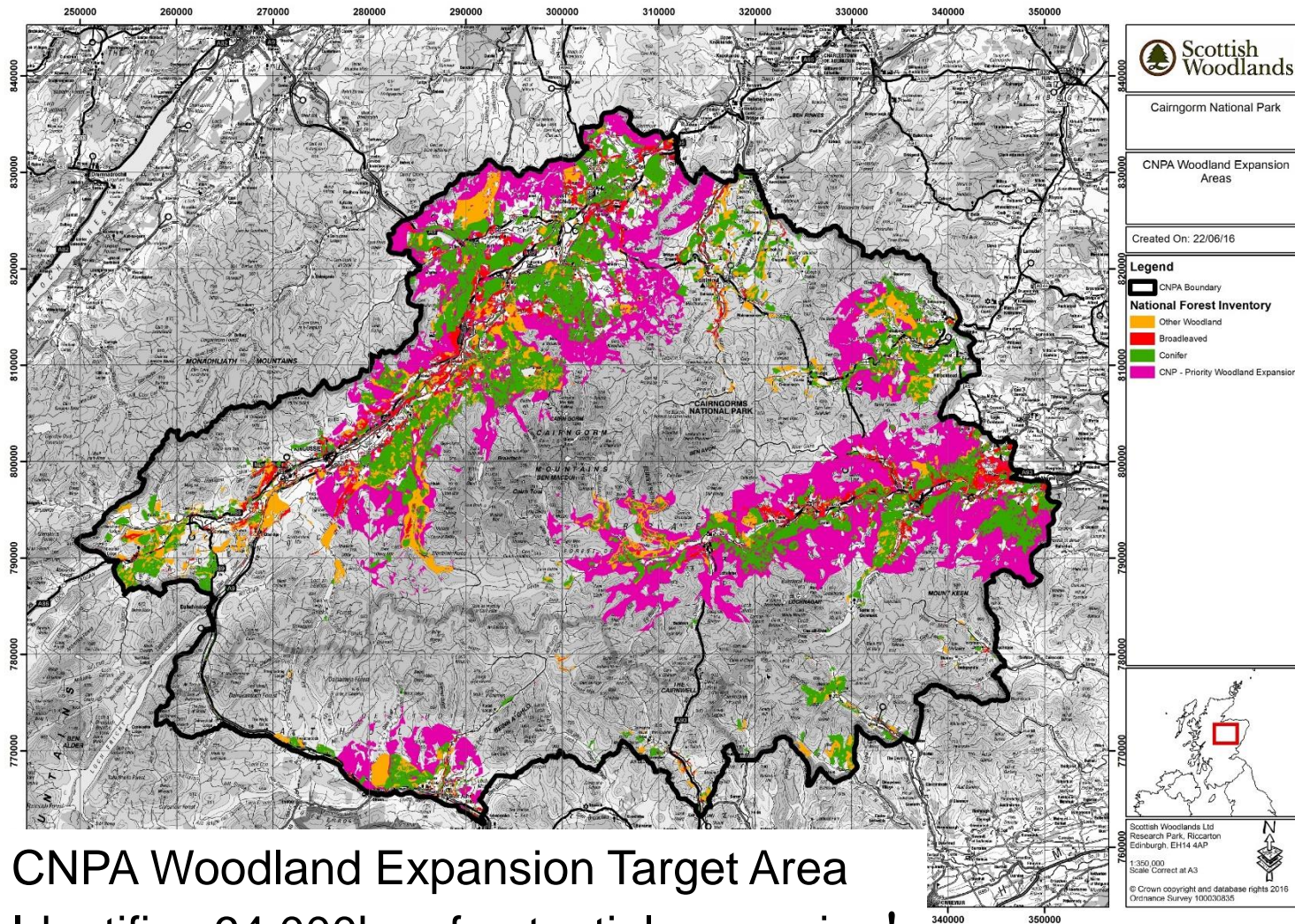


What do we need?

CREATION OF
HABITAT NETWORKS...



Where do we go from here?



CNPA Woodland Expansion Target Area
Identifies 64,000ha of potential expansion!

Sum Up

- Most importantly we need to start by managing what we already have to it's best potential
- There is a great potential to develop new productive woodland within the CNP
- New woodland must be multi benefit
 - Production
 - Access/Recreation
 - Sporting
 - Attractive
 - Diverse
- Will provide increased employment opportunities
- Will form greater habitat networks
- Will be valued for what it is – woodland
- Commercial production can easily coexist with conservation

Thank you, question session to follow.

David Robertson

Regional Manager (North Scotland)

T: 07795 831595

david.Robertson@scottishwoodlands.co.uk

www.scottishwoodlands.co.uk