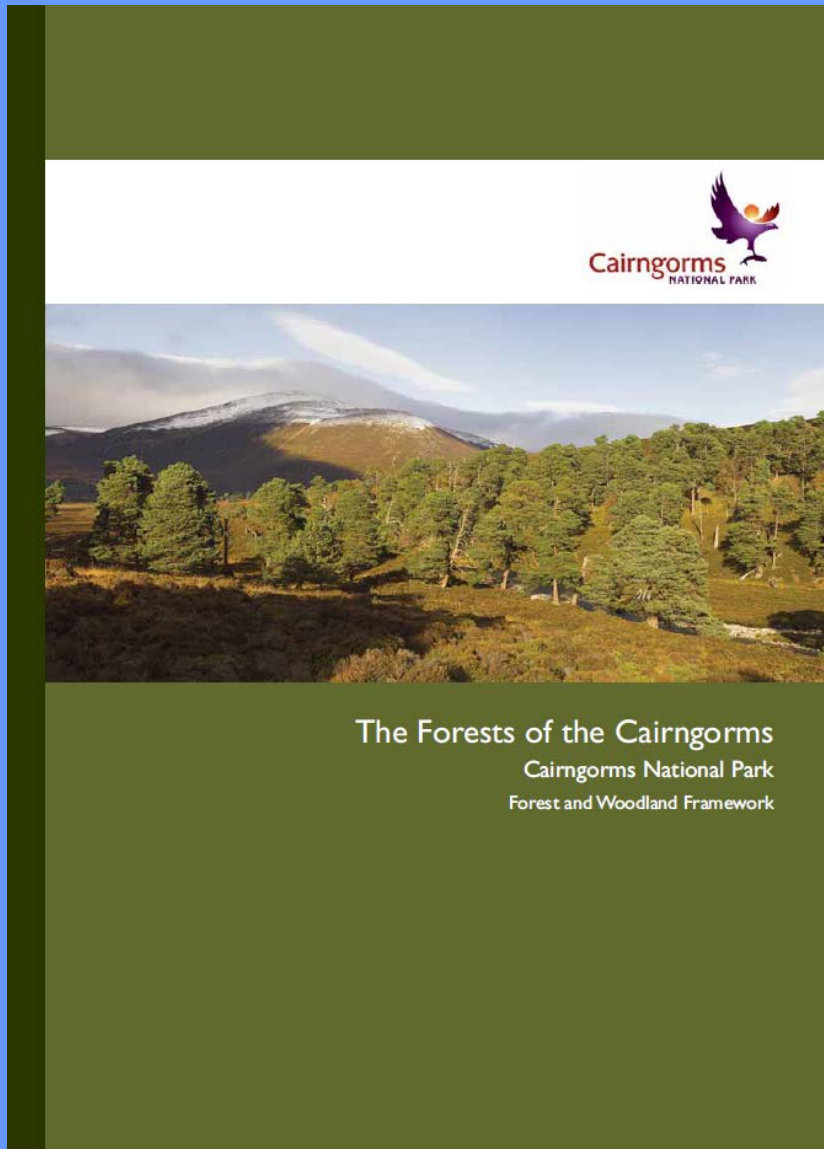


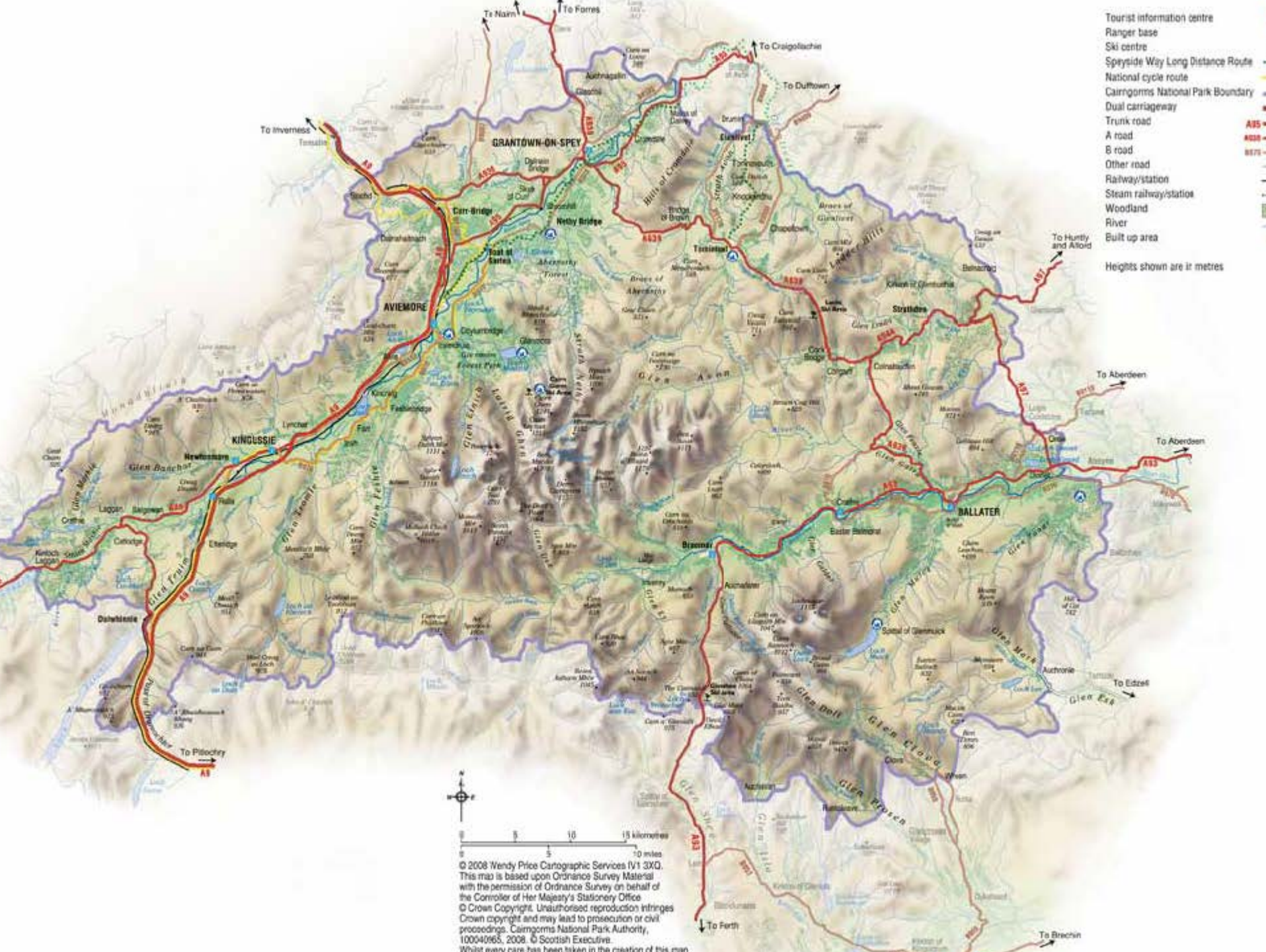
Cairngorms Forest and Woodland Framework

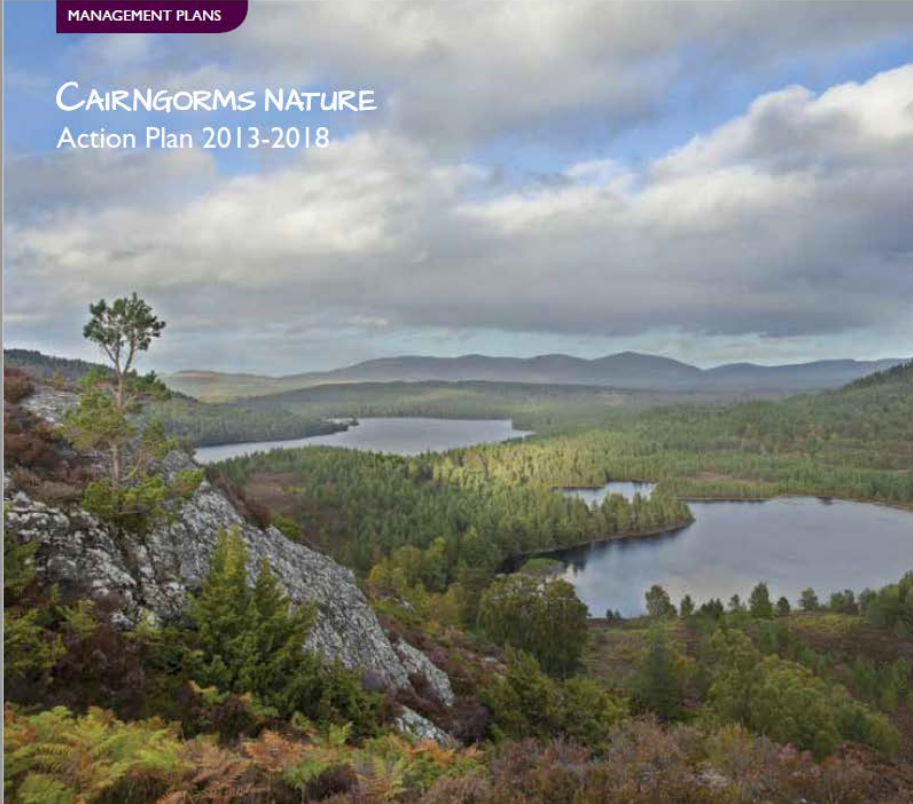
2008 to 2017



Current Framework Strategic Objectives and Priorities

- Forest habitat networks
- Multi-functional forests
- PAWS (Plantations on Ancient Woodland Sites)
- Deadwood
- Montane scrub
- Riparian woods
- Landscape
- Quality timber and forest products
- Non-natives
- Wildfire prevention
- Community involvement





**5000 ha new native
woodland (5%
increase)**

**1000 ha adjacent to
existing woodland**

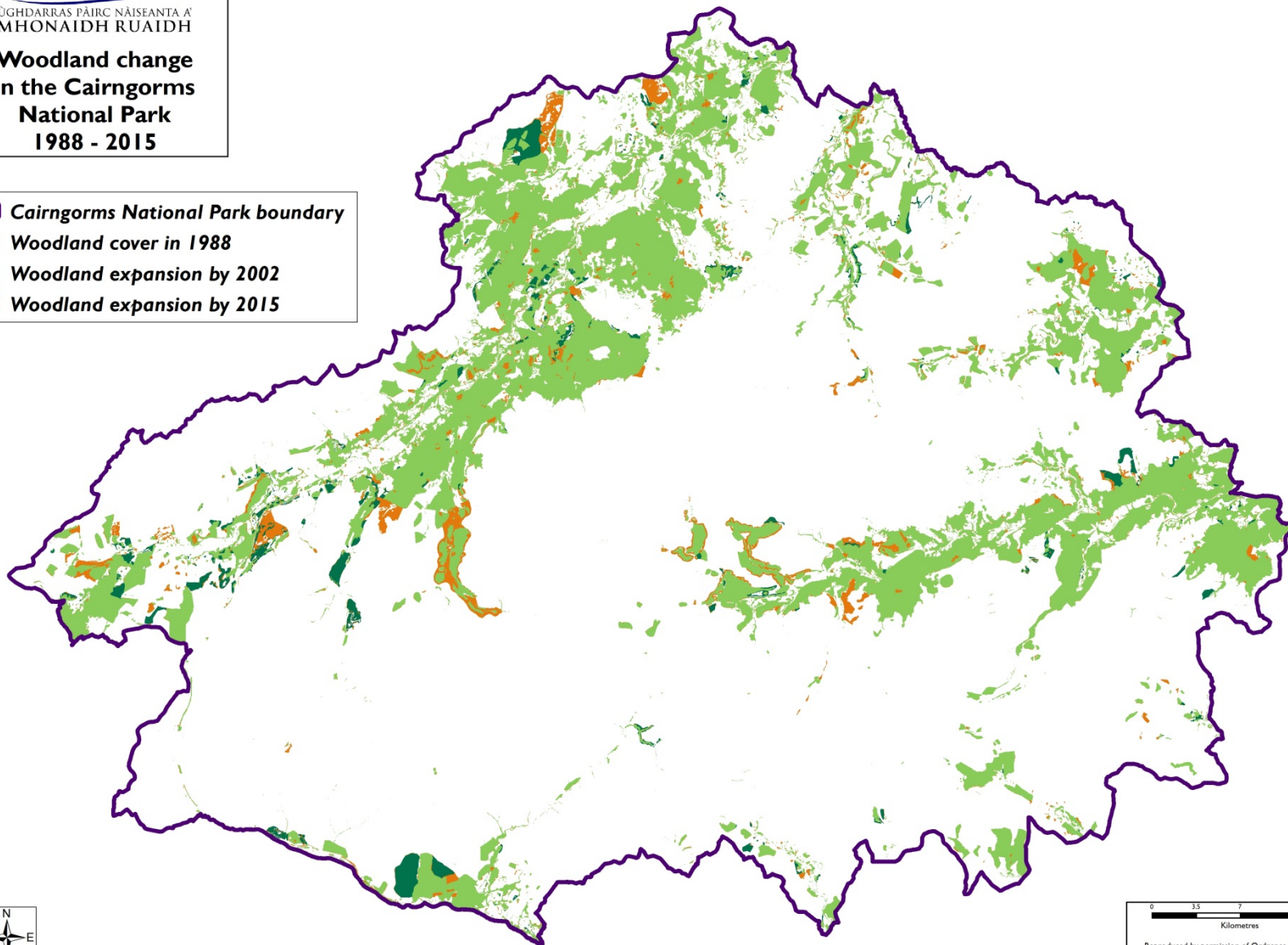
**30% PAWS under
restoration**

CAIRNGORMS
NATIONAL PARK AUTHORITY

ÙGH DARRAS PAIRC NAISEANTA A'
MHON AIDH RU AIDH

**Woodland change
in the Cairngorms
National Park
1988 - 2015**

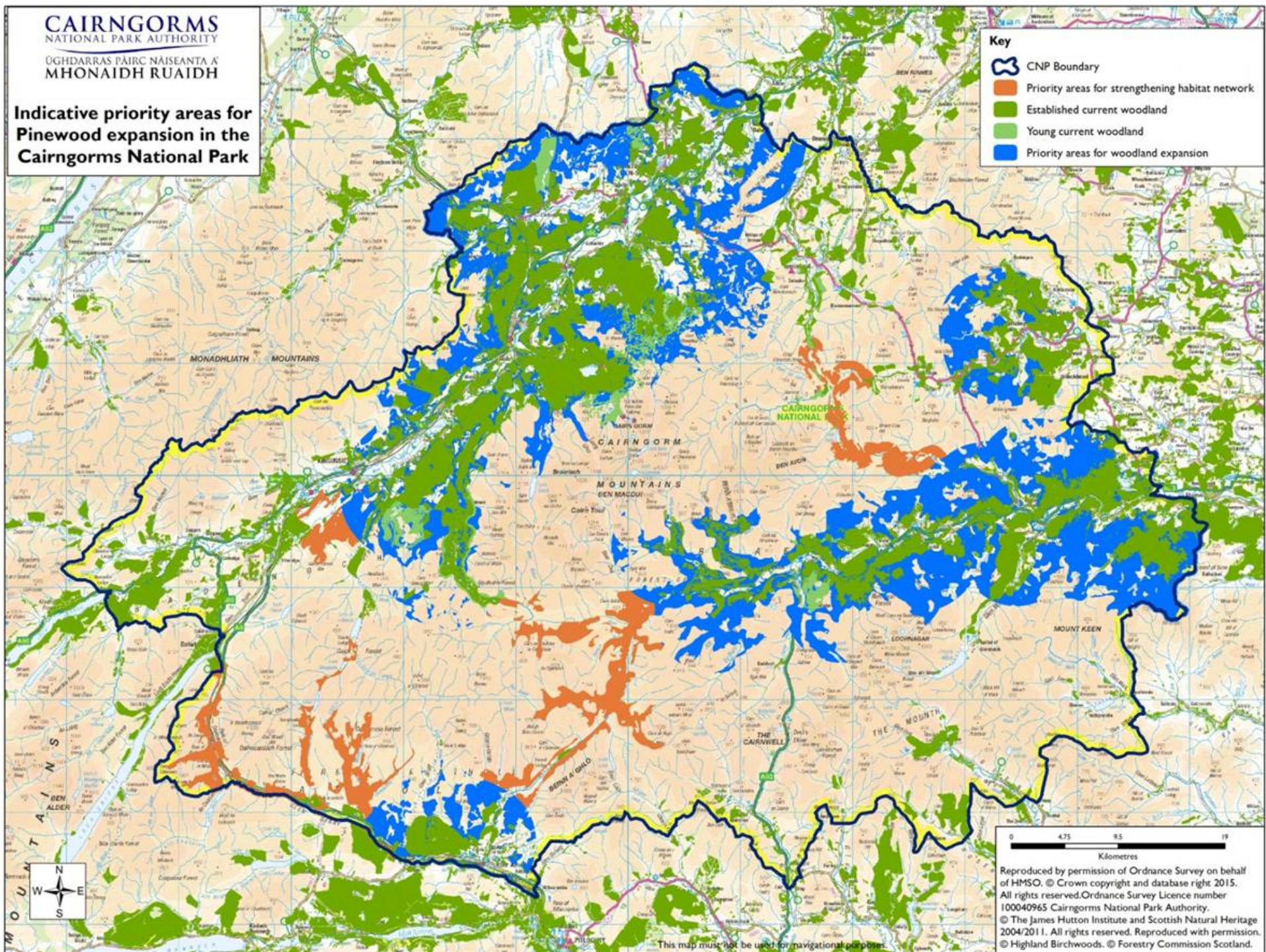
-  Cairngorms National Park boundary
-  Woodland cover in 1988
-  Woodland expansion by 2002
-  Woodland expansion by 2015



0 3.5 7 14
Kilometres

Reproduced by permission of Ordnance Survey on behalf
of HMSO. © Crown copyright and database right 2014.
All rights reserved. Ordnance Survey Licence number
100040965 Cairngorms National Park Authority. © JHI.
© Highland Birchwoods. © Forestry Commission Scotland.

**Indicative priority areas for
Pinewood expansion in the
Cairngorms National Park**





1986

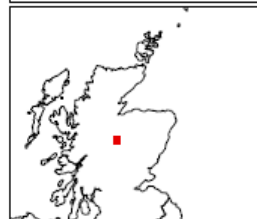
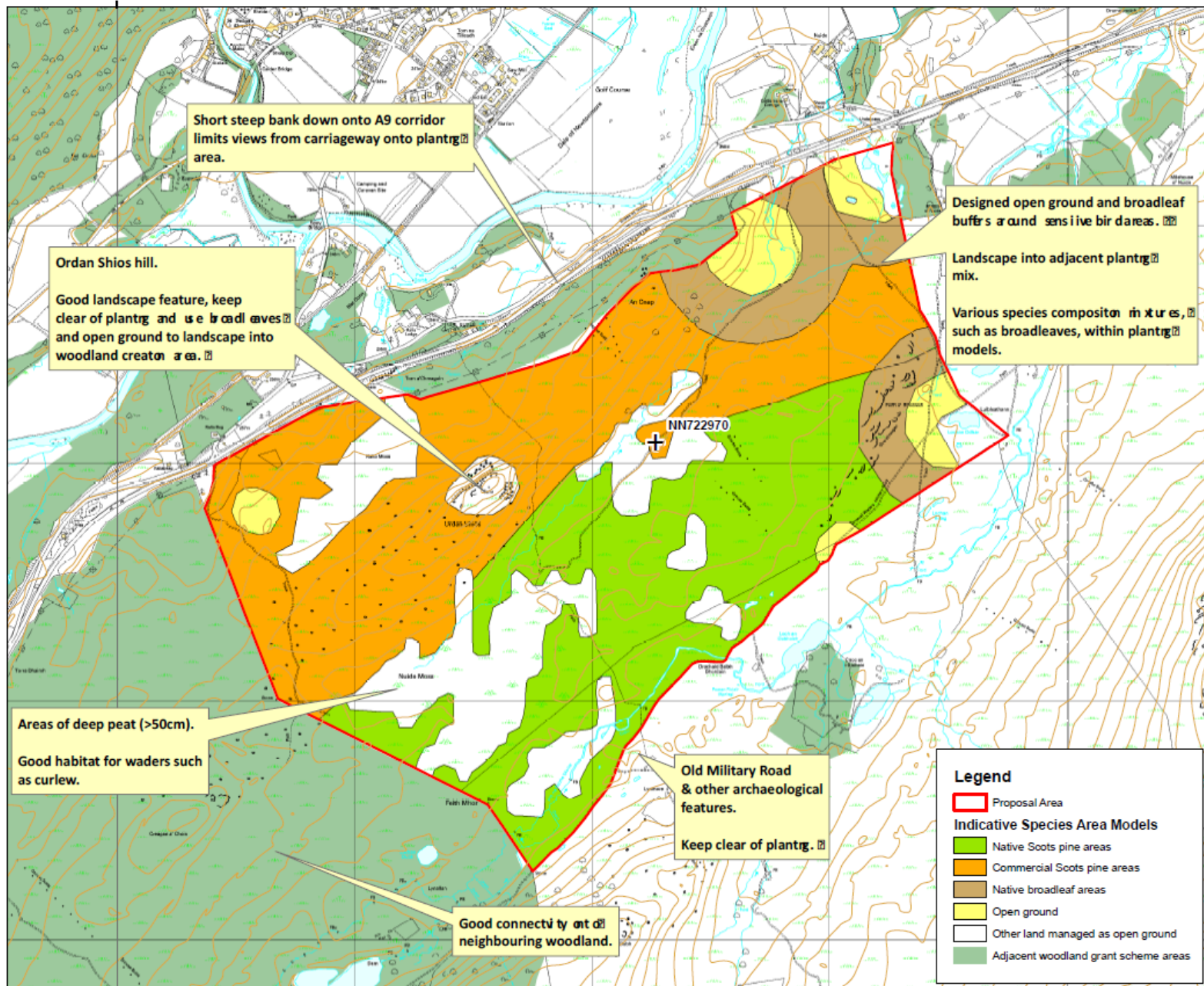


2016





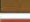






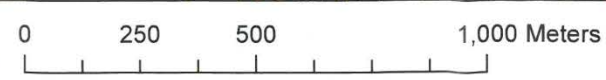
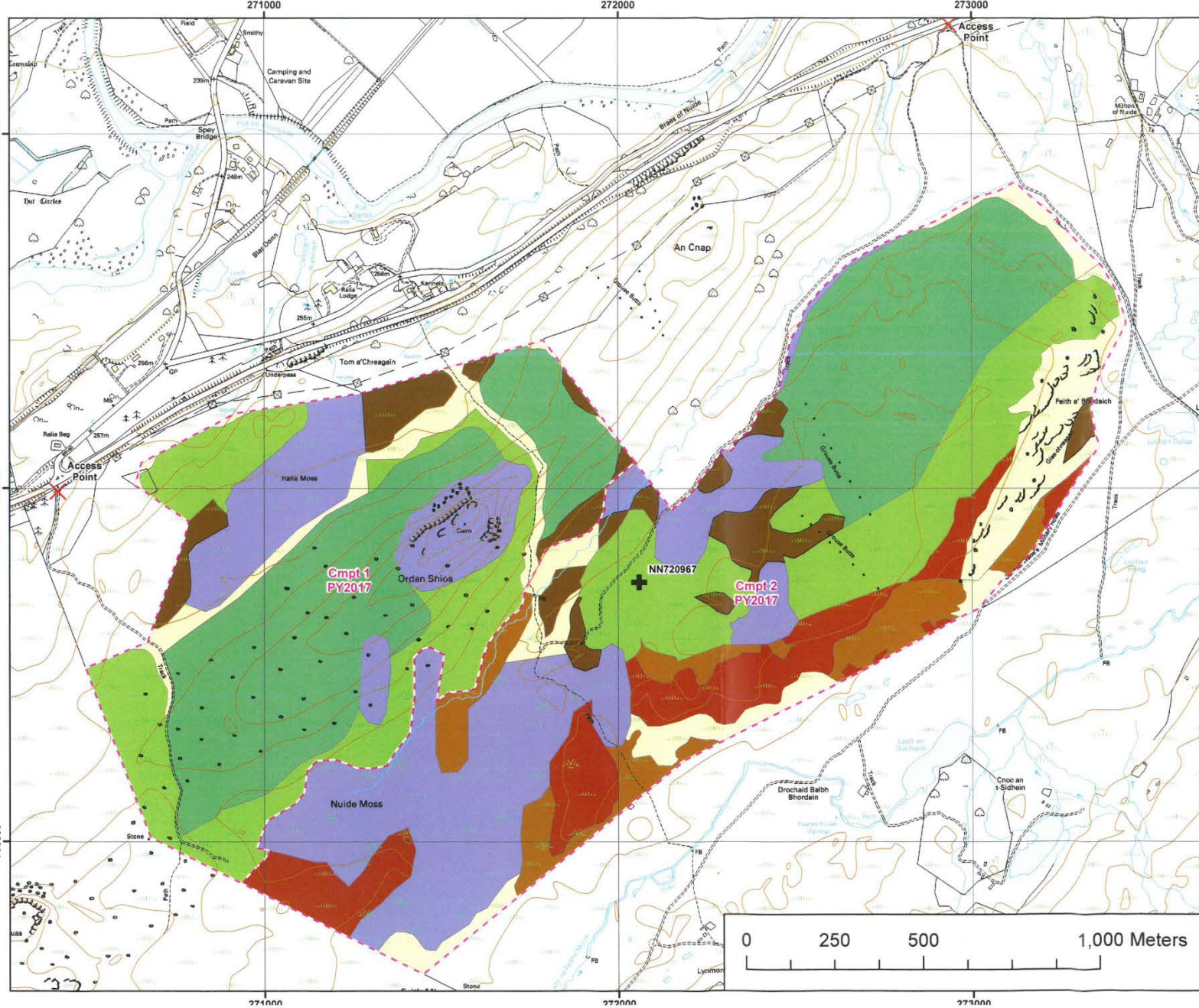




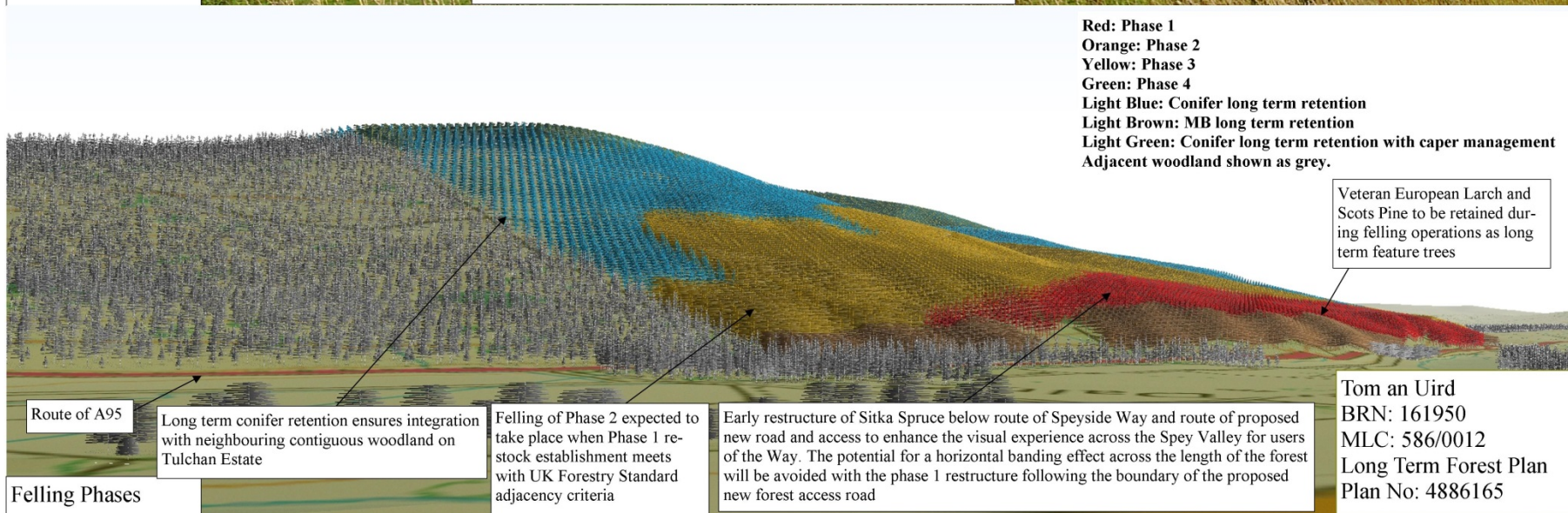
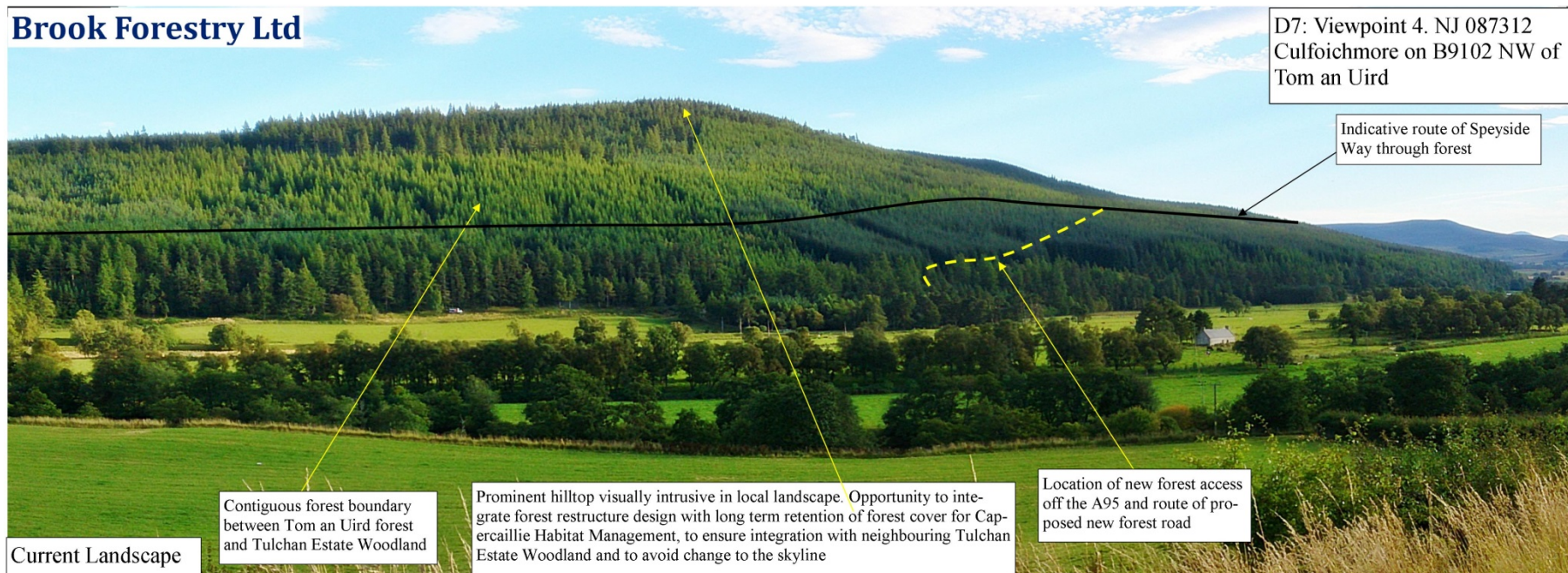


Legend

-  Access Point
-  Compartments
- Species**
 -  Commercial Scots pine with larch
 -  Native Scots pine with broadleaves
 -  Native broadleaves
 -  Native broadleaves (W4) high stocking
 -  Native broadleaves (W4) low stocking
 -  Designed open ground
 -  Open ground (other land)



Brook Forestry Ltd





Woodland Trust/RDI Ancient Woodland Restoration Project

- 1695 ha surveyed
- 500 ha committed to process of restoration















